



Exchequer World



Magento
IRIS Exchequer

Enterprise Class eCommerce

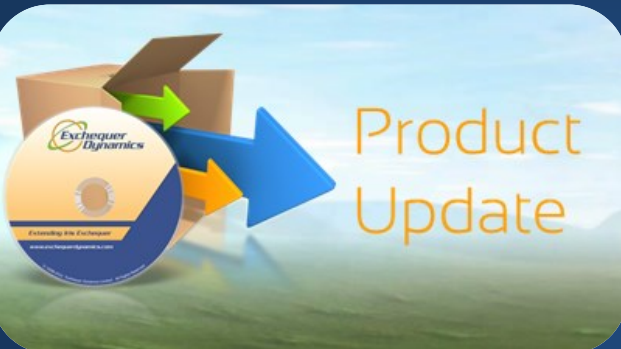
IRIS Exchequer with Magento
See page 5



Case Studies

Successful integration with Cognos
See Page 7

Tips
Reporting
Integration
Support



ExFusion 2

Update of revolutionary platform for
Exchequer integrations
See Page 6



Your IT infrastructure has a busy future

IBM Hardware



IBM Hardware Systems, Servers, and Storage are optimized and architected to maximize performance, efficiency and tuned to the task, to deliver business results in a new era of Smarter Computing.

Flex System x220 (7906J2G)



IBM Flex System x220 Compute Node, Xeon 8C E5-2450 95W 2.1GHz/1600MHz/20MB, 1x4GB, O/Bay HS 2.5in SAS/SATA, SR C105

✓ Stock currently available

IBM ESP: £3,046.00

Please contact a Dealer for final pricing and stock availability.

Flex System x220 (7906F2G)



IBM Flex System x220 Compute Node, Xeon 4C E5-2418L 50W 2.0GHz/1333MHz/10MB, 1x4GB, O/Bay HS 2.5in SAS/SATA, SR C105

✓ Stock currently available

IBM ESP: £1,545.00

Please contact a Dealer for final pricing and stock availability.

Flex System x240 (8737A1G)



Flex System x240, Xeon 6C E5-2630L 60W 2.0GHz/1333MHz/15MB, 2x4GB, O/Bay 2.5in SAS

✓ Stock currently available

IBM ESP: £2,391.00

Please contact a Dealer for final pricing and stock availability.

Flex System x240 (8737R2G)



Flex System x240, Xeon 8C E5-2690 135W 2.9GHz/1600MHz/20MB, 2x4GB, O/Bay 2.5in SAS

✓ Stock currently available

IBM ESP: £4,540.00

Please contact a Dealer for final pricing and stock availability.

IBM Storage

DS3512 Dual Controller (1746A2D)



IBM System Storage DS3512 Express Dual Controller Storage System

✓ Stock currently available

IBM ESP: £4,523.00

Please contact a Dealer for final pricing and stock availability.

DS3524 Dual Controller (1746A4D)



IBM System Storage DS3524 Express Dual Controller Storage System

✓ Stock currently available

IBM ESP: £4,792.00

Please contact a Dealer for final pricing and stock availability.

DS3512 Single Controller (1746A2S)



IBM System Storage DS3512 Express Single Controller Storage System

✓ Stock currently available

IBM ESP: £2,835.00

Please contact a Dealer for final pricing and stock availability.

DS3524 Single Controller (1746A4S)



IBM System Storage DS3524 Express Single Controller Storage System

✓ Stock currently available

IBM ESP: £3,087.00

Please contact a Dealer for final pricing and stock availability.

For more information on any of the IBM products, please call us on 01933429800 or e-mail us at sales@exchequerdynamics.com



Welcome to Exchequer World



I am delighted to welcome you once again to Exchequer World, the magazine for all IRIS Exchequer customers. The aim of the publication is to provide Exchequer users with a mix of our latest product news, tips and advice and the knowledge to help you make the most of your Exchequer investment by connecting it to the rest of the real world. Seamless and robust integration is what we provide, allowing companies to link and automate with other best of breed solutions or software that traditionally were off the radar. We are seeing an increasing number of customers with eCommerce who require 'Real Time' data transfer from their site(s) to their accounting system and visa versa. We offer integration with no constraints, meaning that companies can choose their own website developer or use their existing trusted partner. Using the ExWeb product or the enterprise platform ExFusion the world wide web holds no bounds.

Here at EDL we can provide you with the capability to improve your competitive edge in what is a challenging environment for all of us.

Peter D Marsh

Managing Director - Exchequer Dynamics Ltd

Online Content



You can access this magazine as well as videos and exclusive content at our website:

<http://www.exchequerdynamics.com>

Credits

Exchequer Dynamics Ltd.
Units 20-21,
Somerford Business Park,
Christchurch,
Dorset,
United Kingdom,
BH23 3RU

Designed By
Stuart Holyoak

Printed By
Document Options Limited

Editors
Peter Marsh
Stuart Holyoak
Naseem Richards

Exchequer Dynamics Team
Peter Marsh
Jason Richards
Stuart Holyoak





Front Page



Enterprise Class eCommerce

PAGE 5



Successful Integration with Cognos

PAGE 7



ExFusion 2 Product Update

PAGE 6

Main

IBM Hardware..... Page 2
IBM Hardware advertisement.

Introduction..... Page 3
Editors introduction and links to websites.

Contents..... Page 4
This page.

Magento..... Page 5
IRIS Exchequer/Magento eCommerce.

ExFusion 2..... Page 6
Integration Platform Update.

Barrachd..... Page 9
Case Study— Cognos Integration.

Tips & Tricks..... Page 10
Useful tricks for Exchequer Users Continued.

Sleek MakeUP..... Page 11
Case Study—Integration with Magento.

Pervasive PSQL..... Page 13
High Performance Database Technology.

ExAddress..... Page 14
Fully integrated Postcode Lookup for Exchequer.

Suggestions Page..... Page 19
Do you have ideas for this magazine? Contact here!



<http://www.exchequerdynamics.com/ExchequerWorld>

<http://twitter.com/ExchequerTools>

Connect



Exchequer Dynamics



Magento eCommerce IRIS Exchequer

Becoming a victim of your own success can be a huge problem for Exchequer customers who are successful with eCommerce. Unfortunately there are no enterprise eCommerce solutions capable of managing clusters of front end servers and clustered backend database systems.

The result is a big marketing campaign and web promotion which could bring down your webserver with millions of visitors. This has happened to one of our customers and so we decided to look at a scalable solution for eCommerce that could meet all our customer's needs from toe in the water eCommerce to enterprise clusters.

We found it in Magento, an open source to enterprise solution that is both extensible and totally flexible, not unlike IRIS Exchequer.

As a result we have engaged in a 9 month development project to create our own direct SOAP/REST data transfer protocol based integration with Magento. This will do away with cumbersome import/export CSV and XML files and use a combination of ExFusion code and new configurable services to create a virtual real-time data flow for orders, stock, customers, account discounts and any other data into and out of Exchequer.

For the first time there is a fully integrated Magento Open Source eCommerce solution. that combined with our ExFusion platform delivers to Exchequer customers real, scalable, enterprise eCommerce. This is a platform that does not have to be re-integrated every time the website needs a refresh. It is a future proof investment.

The design agencies will simply have to re-skin the site and add functionality. Underneath, the ExFusion framework will grow with every Exchequer release and at the same time have room for customisation to meet bespoke customer business requirements.

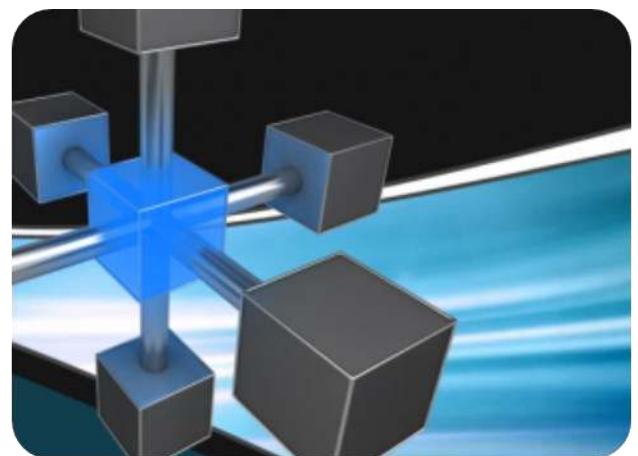
We are already working with existing Exchequer and Magento customers and developers to bring this complete end to end solution to all IRIS Exchequer customers.





Whilst the Product Team at IRIS Exchequer were planning the launch of IRIS Exchequer v7.0 in the winter of 2012, the team at EDL had been working hard on the latest release of ExFusion. Our road-map had this scheduled for November 2012 but we were ahead of the game and the first customers received the new release by the end of Q3.

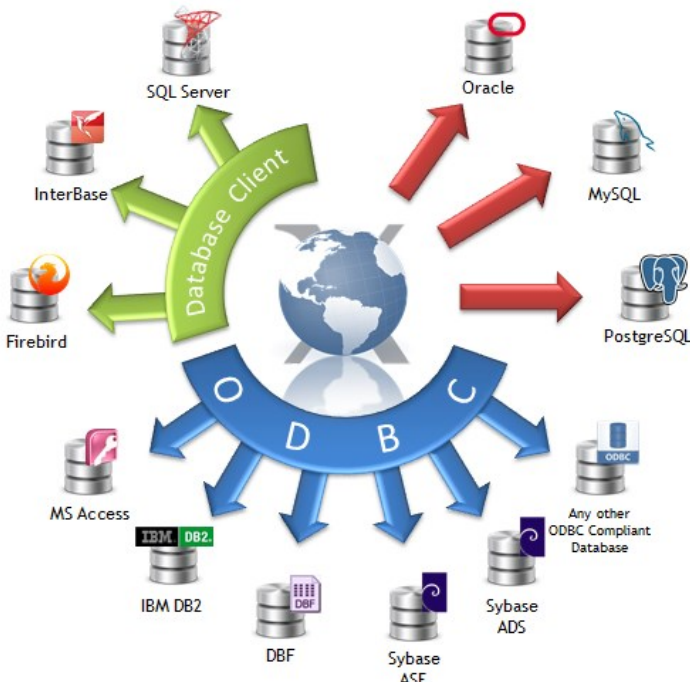
For those who are new to our company, ExFusion is our flagship integration platform for the IRIS Exchequer enterprise accounting system. Since its launch in April 2012 we have seen a steady stream of enquiries and purchases of the product showing us that system integration is on the minds of those discerning Exchequer customers wanting to grow and streamline their business.



To date, we have concentrated on Microsoft SQL and Oracle MySQL as the industry databases of choice that ExFusion will 'talk' to but with the release of ExFusion 2 we are 'Bringing the rest of the world to Exchequer World'.

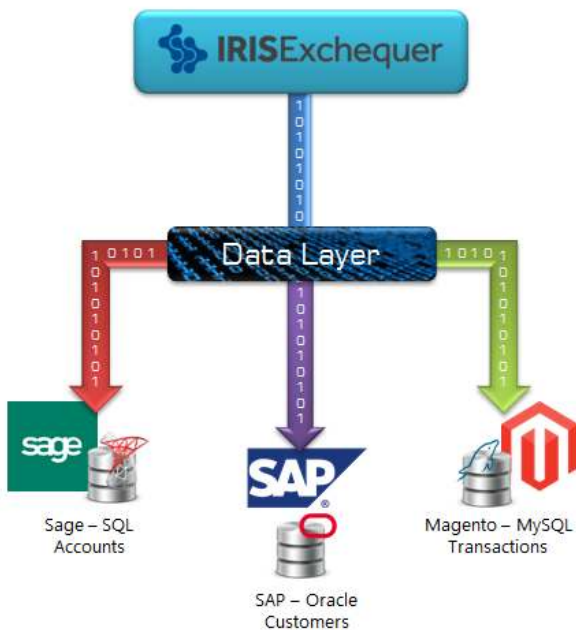
Before we released the product, we thought we would take a step back and look at the paths that you can take when either integrating your Exchequer system or migrating away from Exchequer.

If you would like to keep Exchequer as your accounting system, but would like to extend your investment, then using ExFusion you can now integrate with any of the databases shown in the diagram to the left. Sharing data between internal or external systems will allow the streamlining of business processes as well as cutting operating costs.





Data transfer within ExFusion has been all about direct database links and data transfer. We have shied away from the now rather dated method of data transfer using CSV, XML and text files. However, due to a particular customer requirement, ExFusion2 now contains a module for the import and export of CSV's files. Since this functionality was added it has been left in the core product for all customers to use.



It has been mentioned in previous articles on our website that we have the capability of a seamless migration path to Sage 200. It is now possible to export your data from Exchequer into virtually any database!

Another important feature which has been added as a result of customer feedback is the ability to select different databases for different tables. This is particularly useful where customers are using different databases and applications for reporting on their data. This means that customers can enjoy the synchronisation of multiple databases.

If you are interested in ExFusion2, are an existing customer wanting to upgrade or have ideas for the future product development then please feel free to contact us via e-mail:

(sales@exchequerdynamics.com)

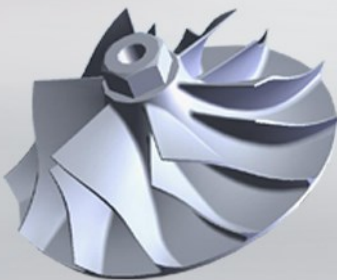




**TURBO
DYNAMICS**

For your turbocharger needs Turbo Dynamics have over 21 years' experience in:

- **Supply**
- **Design**
- **Upgrade**
- **Service**
- **Repair**



British Engineering

We are ISO 9001:2008 accredited and every turbo is treated on an individual basis to meet our stringent ISO quality standards.

Massive range of turbochargers, parts & accessories available to buy online 24/7

www.turbodynamics.co.uk

For sales and technical advice telephone: +44 (0)1202 487497

Units 20-21 Somerford Business Park, Wilverley Road, Christchurch, Dorset BH23 3RU. United Kingdom

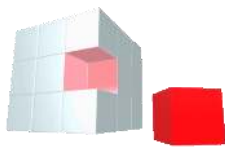


Integration with

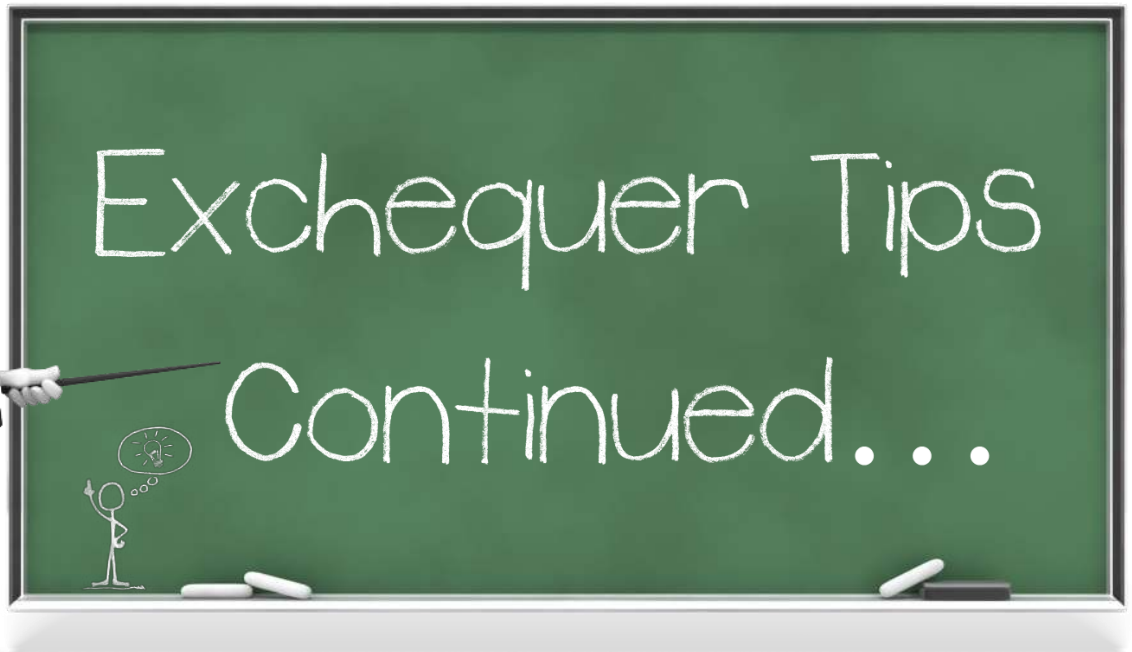


Exchequer Dynamics proud to have partnered with IBM business partner Barrachd to develop a fully integrated solution for IRIS Exchequer to connect to IBM Cognos.

Barrachd have been awarded an IBM Centre of Technical Excellence (CoTE) for Business Partners Award as well as an IBM Beacon Award. For over a year now ExFusion has been powering the integration between IRIS Exchequer and IBM Cognos to delivery business intelligence for IRIS Exchequer in Scotland.



IBM Cognos has the ability to interact, search and assemble all perspectives of your business. Cognos Business Intelligence provides a limitless BI workspace to support how people think and work. It delivers the complete range of BI capabilities: query and reporting, analysis, dashboarding and scorecarding on a single, service-oriented architecture (SOA). And it expands traditional business intelligence (BI) with planning, scenario modelling, real-time monitoring, collaboration and predictive analytics. This integration will deliver the very best of breed business intelligence to IRIS Exchequer customers.



Moving a General Ledger account or Stock Record within its individual tree will result in Exchequer system running several background processes. This is done in order to maintain the accuracy and integrity of your accounts. **These tasks should only be triggered when no other user is accessing the particular data. Failure to avoid this could be costly**

This task can be time-consuming. Exchequer can now compile Stock Moves whilst users are working in the system so that the changes can be processed at a later date in time.

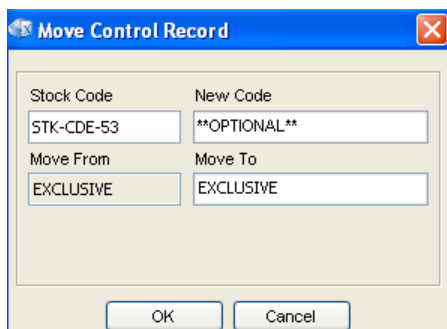
This is available in Exchequer Version 5.71 and above.

Step 1. From the Stock Tree Options choose Stock List and Confirm Yes to compile the List.

Step 2. Choose Add from the Move Control Screen.

Step 3. It is now optional to enter a New Stock Code when moving an item. To keep the same stock code, leave 'New Code' blank.

Step 4. Once all items are listed, they can be processed in ONE move.



Do you have your own suggestions for other Exchequer accountants?

If so please see our suggestions page on Page 17.



Sleek
MakeUP



Magento®
Exchequer

Magento Integration for E-commerce

Sleek Makeup has chosen Exchequer Dynamics to create a new retail e-commerce solution integrated into IRIS Exchequer using the Magento Enterprise eCommerce engine.

Exchequer Dynamics is providing the integration between Magento and IRIS Exchequer using the ExFusion Server platform.

Sleek is growing its market share across EMEA and needed an enterprise e-commerce cluster capable of coping with scaling web requests and virtual real time transactions from website to Exchequer and vice versa.



If an Exchequer customer has made the decision to go we can help and in GCC Innova we have all the tools setup to make it easy for anyone else to move to Sage 200!



Data Forensics

One of the services we offer at Exchequer Dynamics is the use of our software to determine errors within data.

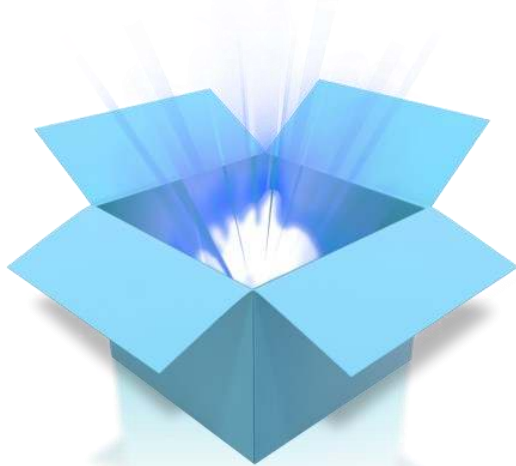
The ExReport application we supply has the ability to query through data, finding errors and incorrect data entry.

This can be especially useful when you have need your Exchequer Database exported into an SQL database.





PSQL v11



Pervasive PSQL v11 is specifically designed to increase scalability and performance on multi-core machines. Install Pervasive PSQL on a multi-core machine, and the benefits are immediately available. Pervasive PSQL v11 also provides support for IPv6, the next generation Internet protocol. Upgraded relational support in the form of a new 64-bit ODBC driver is available with the Windows versions of Pervasive PSQL v11.

The newest version of Pervasive PSQL lets customers easily transition to the latest hardware and software while maintaining application compatibility with 100% reliability in a near-zero database administration environment.

"High Performance, Low Maintenance Database Technology"

If you have a small or mid-sized business (SMB) and are looking for a perfect database, Pervasive SQL is for you. Over the last 25 years it has been constantly refined to fix issues that are vital to these businesses. Some of these issues involve:

- Easy upgrades.
- Self-tuning and self-optimising.
- Consistent application performance.
- Reliable processes without the requirement of a DB administrator.
- Simple (sometimes transparent) installations.
- Backwards Compatibility.
- Migration path to new OS and hardware platforms.

Pervasive PSQL is designed to simplify development and deployment. It reduces the challenges of implementing new technologies such as:

- Multi-core Processing.
- Windows 7.
- Windows Server 2008.
- Linux Distributions.
- 64-bit Computing.

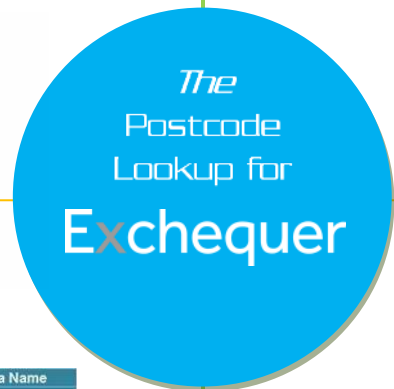


Exchequer Requirements

You will require Exchequer version 6.8 onwards in order to upgrade to PSQL v11



ExAddress Postcode Lookup



ExAddress is a fully integrated Exchequer plugin which allows a 'Postcode Lookup' when adding or editing a Customer or Supplier record.

Postcode Area	Area Name
AB	Aberdeen
AL	St Albans
B	Birmingham
BA	Bath
BB	Blackburn
BD	Bradford
BH	Bournemouth
BL	Bolton
Bri	Brierton

ExAddress is designed to allow quick and easy lookup of address data with just one click. It uses the Royal Mail PAF® (Postcode Address File) with business level accuracy. As well as acting as a postcode lookup, you can also use the plugin to search other fields, for example, company name (provided the company is registered as a business).



Unlike other solutions for quick address lookup, this plugin is fully integrated within Exchequer as a DLL and guarantees that the user is presented with a postcode lookup option whenever saving or editing a Trader record. ExAddress uses the Royal Mail PAF® and Satori Software technology which is known to be the best compared to other postcode systems. This means that ExAddress produces Royal Mail compatible addresses, providing a safeguard from incorrect addresses and charges associated with returned goods.

*Time taken will be affected by network performance, broadband connectivity speed and other hardware performance.

Data supplied by



Powered By



- Users can enter an address in just 3 seconds* with just a postcode.



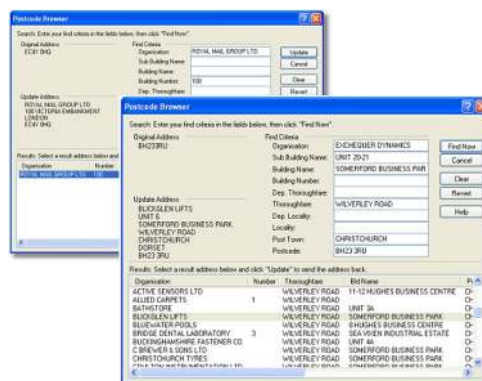
- Automated address entry (one click and the full address data is entered).



- Validate existing address data.
- Complete flexibility to edit the result before saving.
- Ensure that delivery details are Royal Mail compatible and save on bulk mailing costs.

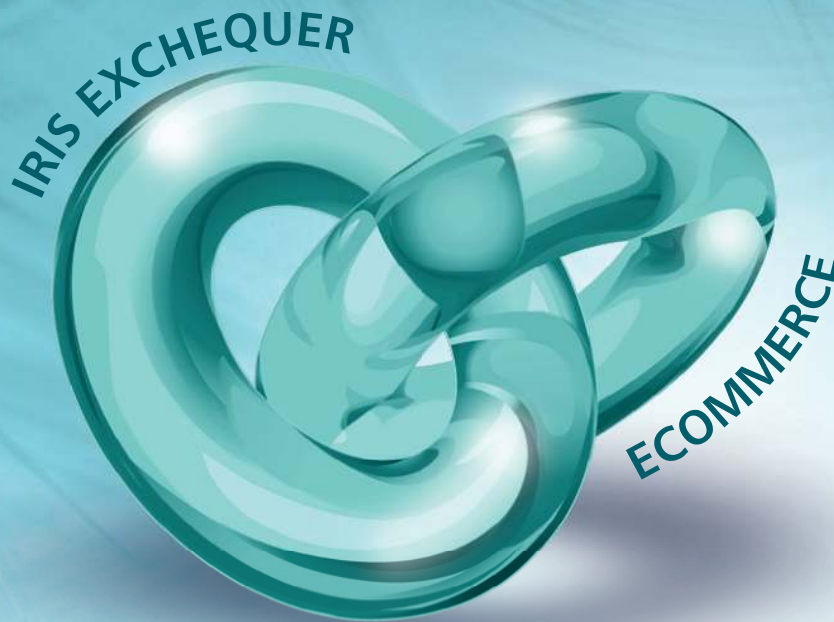


- Seamless integration with Exchequer



Fully integrated Iris Exchequer ecommerce

Ocean Ecommerce is a complete, fully automated, hosted ecommerce integration solution for Iris Exchequer users.



Ocean Ecommerce Exchequer Edition is a professional online shopping cart system fully integrated with Iris Exchequer via ExWeb. With near realtime data transfer you manage your entire stock catalogue from within Exchequer controlling pricing, stock levels and complex discounts.

All changes are automatically synchronised with the web site as a background task. As your web site gathers new customers, retail and trade orders these are instantly pushed into Exchequer as either quotes or sale orders. It's fast, efficient and extremely flexible.



www.ocean-ecommerce.net
sales@ocean-ecommerce.net
+44 (0) 203 006 0454



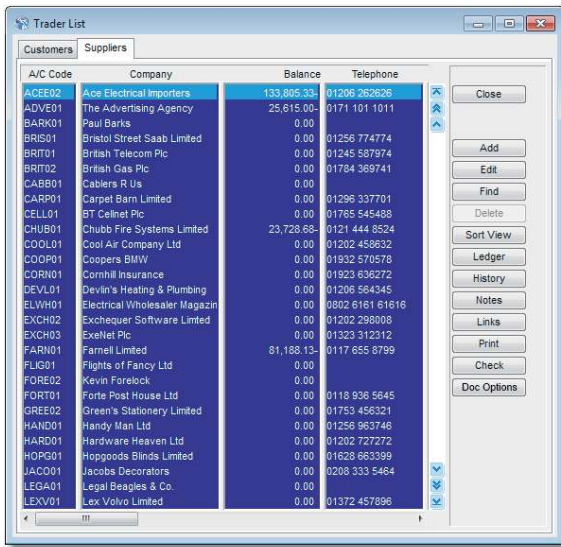


DOCUMENT OPTIONS LIMITED

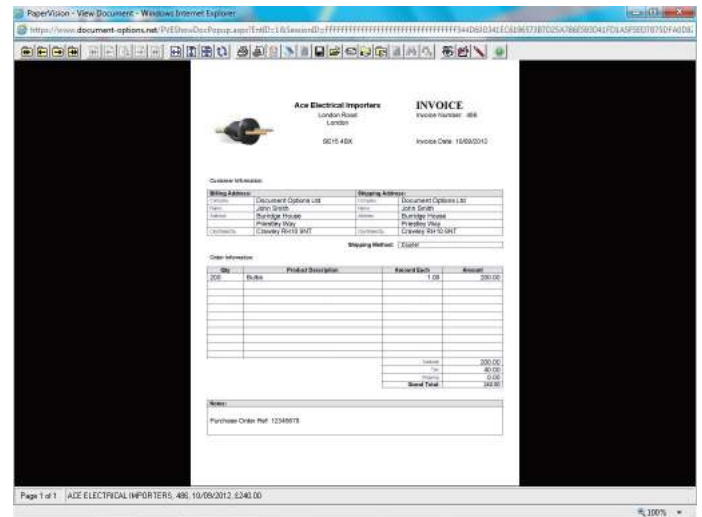
Would you like to access documents directly from Exchequer?

Well now you can. Document Options Ltd have teamed up with Exchequer Dynamics to offer IRIS Exchequer users a unique proposition for the archival and retrieval of documents.

By integrating Exchequer with our award winning cloud based PaperVision system our solution allows you to view actual documents such as supplier invoices directly from within Exchequer.



(For demonstration purposes only)



from this...

...to this



About Document Options

Document Options Ltd is a leading document management and outsourced document scanning service provider. We undertake certain business processes for our clients such as sorting and distributing incoming post, supporting automated invoice processing operations or providing an adhoc scanning service. We also design, develop and deploy on site scanning systems.

As a result, paper-based processes are transformed increasing efficiency, security and availability whilst reducing operating costs, storage costs and time.

If your business has large volumes of incoming or outgoing documents, we would love to speak with you.

Document Options Limited
BurrIDGE House, Priestly Way
Crawley, RH10 9NT

T: +44 (0) 1293 426677
F: +44 (0) 1293 403453

sales@dol.co.uk
www.dol.co.uk



What does this mean for me?

Ever had the problem of needing to view an actual invoice or document which has been archived? Thumbing through lever arch files or boxes or paper isn't ideal. But by digitising your documents and indexing them correctly means you can search for a document quickly and without leaving your desk.

By further integrating your scanned images with your accounts package means you can seamlessly switch between an invoice entry and the actual invoice image.

What is PaperVision?

PaperVision is an award winning enterprise document management system. It can be accessed via the Internet with a username and password or via line of business applications such as SAP, Oracle and Exchequer. PaperVision is available either as a cloud service whereby we host your documents on our secure servers and provide support for a fixed monthly fee. Alternatively PaperVision can be purchased outright for you to host your own documents on your own servers for a one off cost and yearly support fee.

The system is very easy to use and is currently deployed across hundreds of organisations and companies ranging from London Borough of Southwark, Caffyns Motor Group and Southern Water.

How does the integration work with Exchequer?

The integration has been built by Exchequer Dynamics, a renowned solution provider specialising in integrating other business systems with IRIS Exchequer. The integration works by using document information such as invoice number, amount and date to generate a dynamic URL. This URL launches PaperVision and, using the document information, enables PaperVision to perform a search and display the relevant documents.

How do I digitise my documents?

As one of the largest scanning service providers in the country, Document Options Ltd is well placed to provide you with a scanning service. Alternatively we can provide scanning systems for you to scan your own documents inhouse.

I already have scanned documents, can you use them?

Yes.

Can I try before I buy?

Almost! Given the initial setup cost we would be unable to install the PaperVision launch button on your Exchequer or other system. However we can scan a selection of your documents and host them on PaperVision free of charge for you to trial and test the PaperVision system.





ExContact

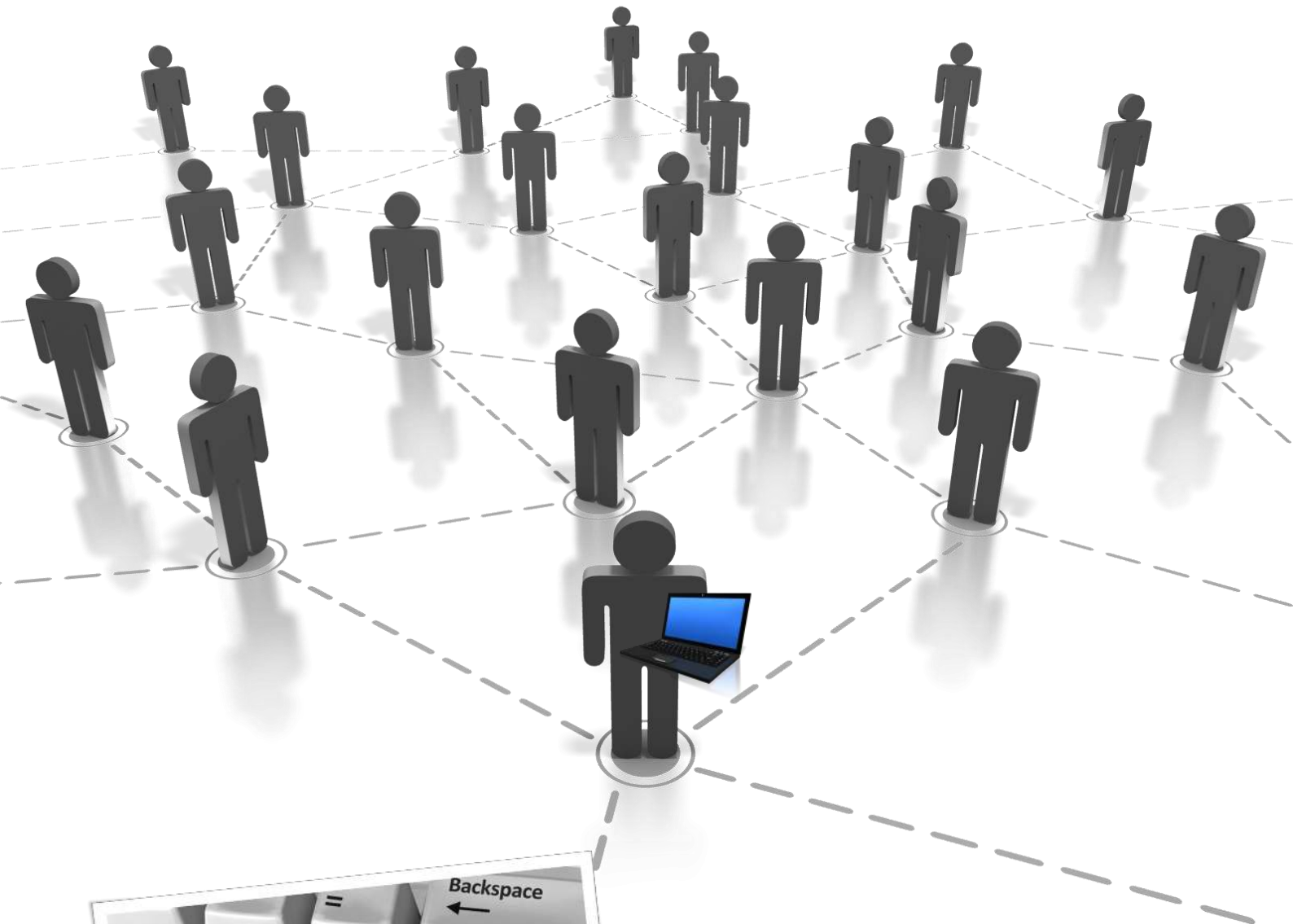
ExContact is a plugin for IRIS Exchequer to manage contacts adding additional functionality. Optional ExAddress Postcode look and verification.

Get your free copy by contacting us with your details .

One of the simple features is the ability to choose whether to pull in the Company Account address details on inserting a new contact.

ExContact is also now fully compatible with the Exchequer TeleSales module.





Suggestions?

If you have any suggestions for Exchequer World Publication, please send an e-mail to sales@exchequerdynamics.com

Content is not limited, you can send articles, ideas, images and even sound.

All sources will be credited.



Tips

Reporting

Integration

Support

Exchequer Dynamics Ltd,
Units 20-21 Somerford Business Park,
Christchurch,
Dorset,
United Kingdom,
BH23 3RU
Sales: +44 (0) 845 519 4487

