



Exchequer World



Enhance your Reports

Reporting tools for the next generation!
See page 10



Data Conversion

New Synchronisation Service
See Page 7



ExFusion Release

Release of revolutionary platform for
Exchequer integrations
See Page 6

Tips
Reporting
Integration
Support



Your IT infrastructure has a busy future

IBM Hardware



IBM Hardware Systems, Servers, and Storage are optimized and architected to maximize performance, efficiency and tuned to the task, to deliver business results in a new era of Smarter Computing.

System x3200 M3 (7328EAG)



Express x3200 M3, Xeon 4C X3430 2.4GHz/1333MHz/8MB, 1x2GB, O/Bay HS 3.5in SAS/SATA, SR BR10il, Multi-Burner, 401W p/s, Tower

Express Seller item

✓ Stock currently available

IBM ESP: £722.00

System x3550 M3 (7944K3G)



Express x3550 M3, Xeon 4C E5620 80w 2.40GHz/1066MHz/12MB, 1x4GB, O/Bay HS 2.5in SAS/SATA, SR M5014, 675W p/s, Rack

Express Seller item

✓ Stock currently available

IBM ESP: £1,138.00

System x3550 M3 (7944KMG)



Express x3550 M3, Xeon 6C E5645 80W 2.40GHz/1333MHz/12MB, 1x8GB, 2x300GB HS 2.5in SAS, SR M5014, Multi-Burner, 2x460W p/s, Rack

Express Seller item

✓ Stock currently available

IBM ESP: £1,554.00

System x3650 M3 (7945KLG)



Express x3650 M3, Xeon 6C X5650 95W 2.66GHz/1333MHz/12MB, 3x4GB, O/Bay HS 2.5in SAS/SATA, SR M5015, Multi-Burner, 675W p/s, Rack

Express Seller item

✓ Stock currently available

IBM ESP: £1,849.00



Offerings

BladeCenter S Chassis (8886K2G) BladeCenter E Chassis (86774TG) BladeCenter H Chassis (88524TG)



Express IBM BladeCenter S Chassis with C14 2x950/1450W PSU, Rackable

Express Seller item

✓ Stock currently available

IBM ESP: £2,186.00



IBM eServer BladeCenter(tm) Chassis with 2x2320W PSU

✓ Stock currently available

IBM ESP: £3,773.00



IBM BladeCenter H

✓ Stock currently available

IBM ESP: £4,918.00

For more information on any of the IBM products, please call us on 01933429800 or e-mail us at sales@exchequerdynamics.com



Welcome to Exchequer World



Exchequer World is an official publication from Exchequer Dynamics Ltd. The name chosen for this quarterly magazine came from the feeling that Exchequer World was somehow far removed from the rest of the world! The closed world of selected channel partners is not one where customers always get the best solutions or the best value for money. At Exchequer Dynamics we aim to bring value, service, elegant and robust software that will quickly deliver integration that works. Exchequer customers are generally discerning businesses led by individuals with a clear focus on success. The information in the magazine is aimed at business owners, MD's and FD's who are looking to invest in and expand their business. We are striving to meet the requirements of a world that is constantly changing by bringing the availability of best of breed solutions that companies dream about, to work with Exchequer.

Here at EDL we are looking to enhance Iris Exchequer by connecting it to the rest of the real world.

Peter D Marsh

Managing Director - Exchequer Dynamics Ltd

Online Content



You can access this magazine as well as videos and exclusive content at our website:

<http://www.exchequerdynamics.com>

Credits

Exchequer Dynamics Ltd.
Units 20-21,
Somford Business Park,
Christchurch,
Dorset,
United Kingdom,
BH23 3RU

Designed By
Stuart Holyoak

Printed By
Document Options Limited

Editors
Peter Marsh
Stuart Holyoak
Naseem Richards

Exchequer Dynamics Team
Peter Marsh
Jason Richards
Stuart Holyoak





Front Page



Reporting tools for the next generation
PAGE 17



Fast data conversion with new service
PAGE 7



ExFusion Release
PAGE 6

Main

IBM Hardware..... Page 2
IBM Hardware advertisement.

Introduction..... Page 3
Editors introduction and links to websites.

Contents.....Page 4
This page.

21st Century.....Page 5
An article from our MD on the future of Exchequer.

ExFusion.....Page 6
New limitless integration platform.

ExSync: Service..... Page 7
New synchronisation service application.

ExReport..... Page 10
Visual query builder for rapid reporting.

Tips & Tricks..... Page 12
Useful tricks for Exchequer Users

ExSync 4 Update..... Page 13
The latest updates to the application.

ExSync Comparison..... Page 18
The different releases and features of ExSync

Suggestions Page..... Page 19
Do you have ideas for this magazine? Contact here!



<http://www.exchequerdynamics.com/ExchequerWorld>

<http://twitter.com/ExchequerTools>

Connect    



Exchequer Dynamics



Exchequer

In the 21st Century

So what is all the fuss about? Where have we been hiding all these years? Coming out of the 1990's and bringing performance, integration, reliability and remarkable support to 'Exchequer World'.



It is as if we have been stuck in a time warp and whilst some push vapourware and fancy brochures of products soon to be delivered in the Spring or Summer or is it the following year Spring, Summer..... Exchequer Dynamics is on a mission to open up 'Exchequer World' to the 21st century of software that is affordable and second to none. As we grow, we are releasing some as Open Source/ Freeware.

For too long Exchequer customers have been held to ransom by high prices and little choice.

Our software is born out of the requirements of real business, working in the real world and listening to our customers. We are striving to meet the requirements of a world that is constantly changing.

The closed world of selected channel partners is not one where customers always get the best solutions or the best value for money. Up sell, up sell, up sell is what drives the locomotive of high priced IT.

At Exchequer Dynamics we aim to bring value, service, elegant and robust software that will quickly deliver integration that works. No wonder we are unpopular and blocked on Twitter by the authors!

It must say something about us when our software is being deployed in data centres across the UK to manage CRC and Emission factor for very large organizations.



We are opening up highway after highway of bi-directional connectivity into products like IBM Cognos, Microsoft Dynamics & Nav, Paperless Document management & archiving, Warehousing with Keymas, e-Commerce with Ocean Design as well as bespoke systems. Guess what? The list is growing and customers are queuing up at our door. One thing is common and inevitable. They are tired of being overcharged, having poor support and under delivery from the promises of the glossy brochures and the big up sell.

Giving away our simple contacts plugin for Exchequer is just a demonstration of the features that customers have been asking for and paying support on for years. It has only taken a few days to develop and we will be adding more features soon! If you like it and have ideas, tell us and we will listen, engage and implement them if we are convinced it will open up 'Exchequer World' further.

The more customers who join us the more we will invest in the research and development of our rapidly growing portfolio. The great thing about our integration model is that it binds all the best of breed solutions which companies dream about to work with Exchequer and where the customer can benefit from the expertise of the partners we work with to support them. We are finding that customers have been burnt by having all the IT solutions in one basket and held to ransom on price. The spread of risk among a number of strategic partners is beneficial, cost-effective and ensures that partners are constantly engaged to deliver.

If you love Exchequer for all that it is known to be good for but want to resolve all the things that drive you mad, we can help! That is what we do, enhance Iris Exchequer by connecting it to the rest of the real world.



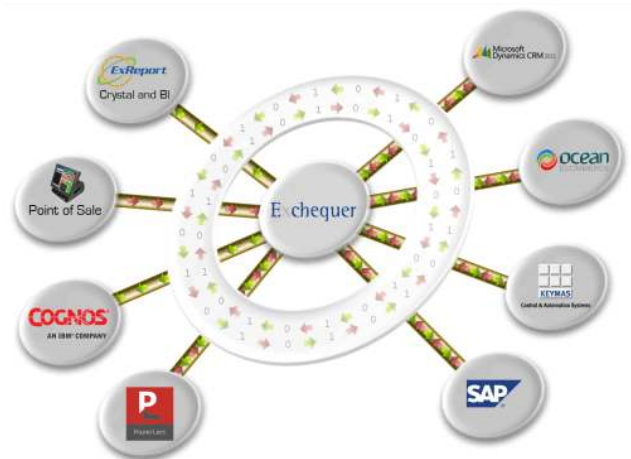


There are many issues when integrating with Iris Exchequer. If you have had experience in trying to do so you will know that the road is fraught with trials and tribulations. The off-the-shelf solutions are few, narrow and dated. The bespoke route is costly, problematic and time-consuming.

Our new flagship product, ExFusion, bridges the gap between migration to other systems and integration with other best of breed solutions that can extend your IRIS Exchequer investment. With integrations already completed in E-commerce, IBM Cognos and Keymas Warehouse Management, we are well on the way to making the process very easy and cost efficient.

We highly recommend you watch our video for this product to truly understand its nature.

You can watch the video at : <http://www.exchequerdynamics.com/?q=ExFusionLaunch>



“ExFusion is a multi layer data conduit to connect external applications and solutions to the core Iris Exchequer financials. It ‘wraps’ Exchequer and manages data extraction, synchronisation and data write back for virtually any database driven application. The number of integrations possible is infinite and the choice is yours. ExFusion offers simplicity, faster data transfer and real cost savings.”

Faron Dickson - Technical Director





Benchmark Computer Specifications: Lenovo D-30 -

- Memory – 24GB (6X4GB ECC UDIMM)
- Processor – Xeon E5-2660
- Hard Drive - 1x2TB SATA/7200rpm
- Operating System - Windows 7 Professional, 64 bit
- Graphics Card - Nvidia Quadro5000 (2.5GB)

78% Speed Increase

Having listened to our current and potential customers, Exchequer Dynamics have taken the current data conversion application ExSync to the next level as a Windows service.

A service is designed to be a 24/7, background process to perform specific functions and generally does not require user intervention. As far as ExSync is concerned it has been designed to be 'set and forget'.

As part of the company's 'Quality without Compromise' ethos the development team have been looking further at memory management, data throughput and enhancing overall performance.

The result of the hard work is impressive and rewarding:-

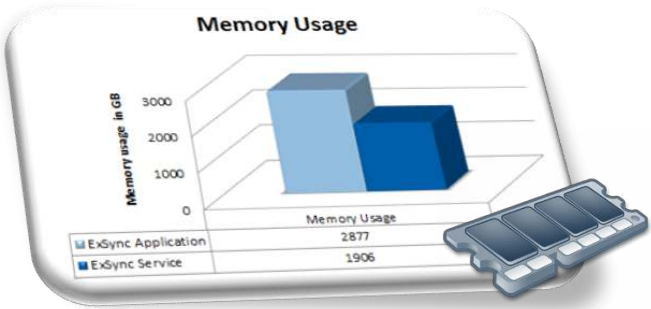
The ExSync Windows Service Application has a staggering 78% increase in performance and 30% drop in memory usage over the existing ExSync product (v.3.0.1.1) which is already renowned as the fastest tool on the market for data extraction from the Iris Exchequer accounting system. This represents a worthwhile upgrade for customers with larger data sets.

We have bench-tested both products using an average sized company's data for a three year period, extracting 1,538,019 records from Exchequer.

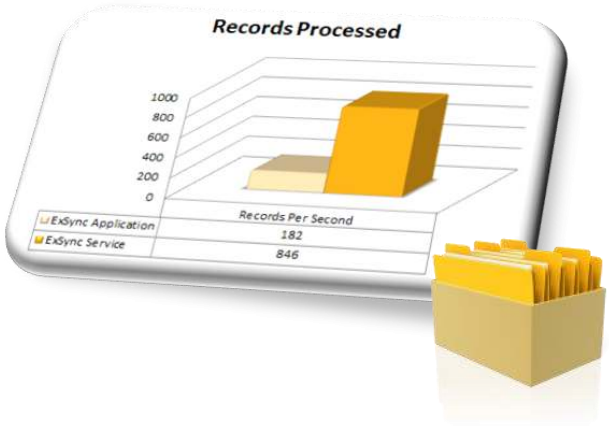
The graph below shows the synchronisation time dropping from nearly 2½ hours to just 30 minutes!

We also tested the memory usage for the service. We tested using 4GB of RAM (Memory allocation for the service), which is the recommended amount of memory to achieve the best results.

You can see from the graph the memory usage has decreased by 30% when using the Windows Service Application!



The records processed per second is equally as staggering with the new 'Service' crunching through nearly **850 records per second!**





Hosted Services

Exchequer Dynamics offers Managed Hosting across Microsoft/Linux server platforms.

Servers are hosted in a secure managed environment. Our technical office is located 10 minutes away from the data centre which enables us the offering of fast, dedicated 24/7 support to customers and a personalised service.

Some of the features of our service include:

- Our dedicated IT team managing your hosted environment.
- Personalised management of your hosted environment.
- Bespoke server configurations.
- IBM/Sun/HP/Dell Hardware.
- Tier 3 data centre availability.
- Service levels from 4 hours to 24/7 support.

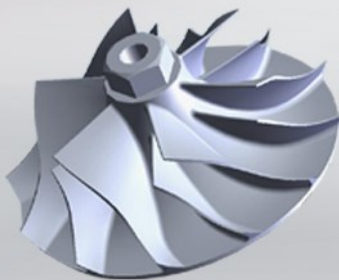




**TURBO
DYNAMICS**

For your turbocharger needs Turbo Dynamics have over 21 years' experience in:

- **Supply**
- **Design**
- **Upgrade**
- **Service**
- **Repair**



British Engineering

We are ISO 9001:2008 accredited and every turbo is treated on an individual basis to meet our stringent ISO quality standards.

Massive range of turbochargers, parts & accessories available to buy online 24/7

www.turbodynamics.co.uk

For sales and technical advice telephone: +44 (0)1202 487497

Units 20-21 Somerford Business Park, Wilverley Road, Christchurch, Dorset BH23 3RU. United Kingdom



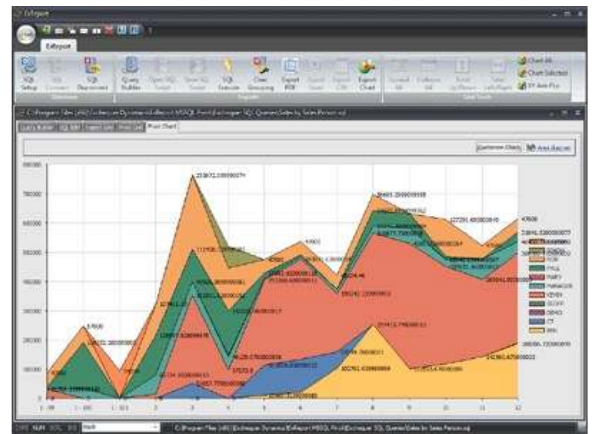
ExReport

ExReport Visual Query and Data Mining.

ExReport takes Iris Exchequer Reporting to the next level with simple drag and drop Pivot data mining and multi-dimensional views of the data

“ExReport exposed a £34,000 stock discrepancy between our balance sheet stock account and the stock valuation report figures. We could simply find where the problems lay inside Exchequer.”

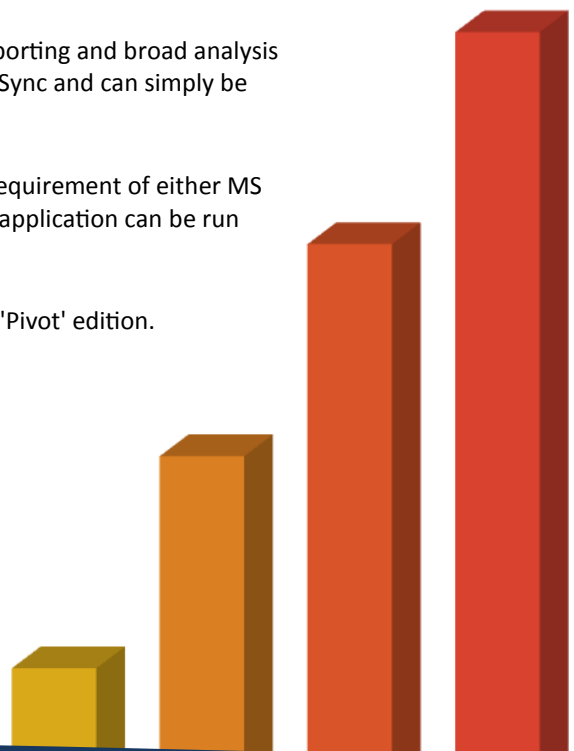
Ray Pritchett - Turbo Dynamics Limited



ExReport has been designed to integrate with ExSync to provide rapid reporting and broad analysis of data. ExReport does not necessarily have to run in conjunction with ExSync and can simply be used for the visual querying that it supplies.

The ExReport software does not have any dependencies other than the requirement of either MS SQL Server or Oracle MySQL to read data from. Multiple instances of the application can be run across a network.

There are two versions of ExReport: the standard edition and the unique 'Pivot' edition.

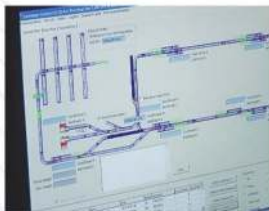




A NEW KIND OF WAREHOUSE MANAGEMENT SYSTEM

Created with your business in mind

K-Store innovatively combines the benefits of barcode technology with information management software to create a solution to manage your warehouse, picking and stock rotation.



CALL (01384) 401162 to talk to our team today or visit our website www.k-store.co.uk for more information.

Improve warehouse efficiency, monitor and optimise performance, increase accuracy and control in your warehouse operation allowing seamless integration with your current business system. Our warehouse system focuses on the core processes of the warehouse or distribution centre, managing in the Goods in, Product put away, Stock control, Orders, Picking and Despatch.

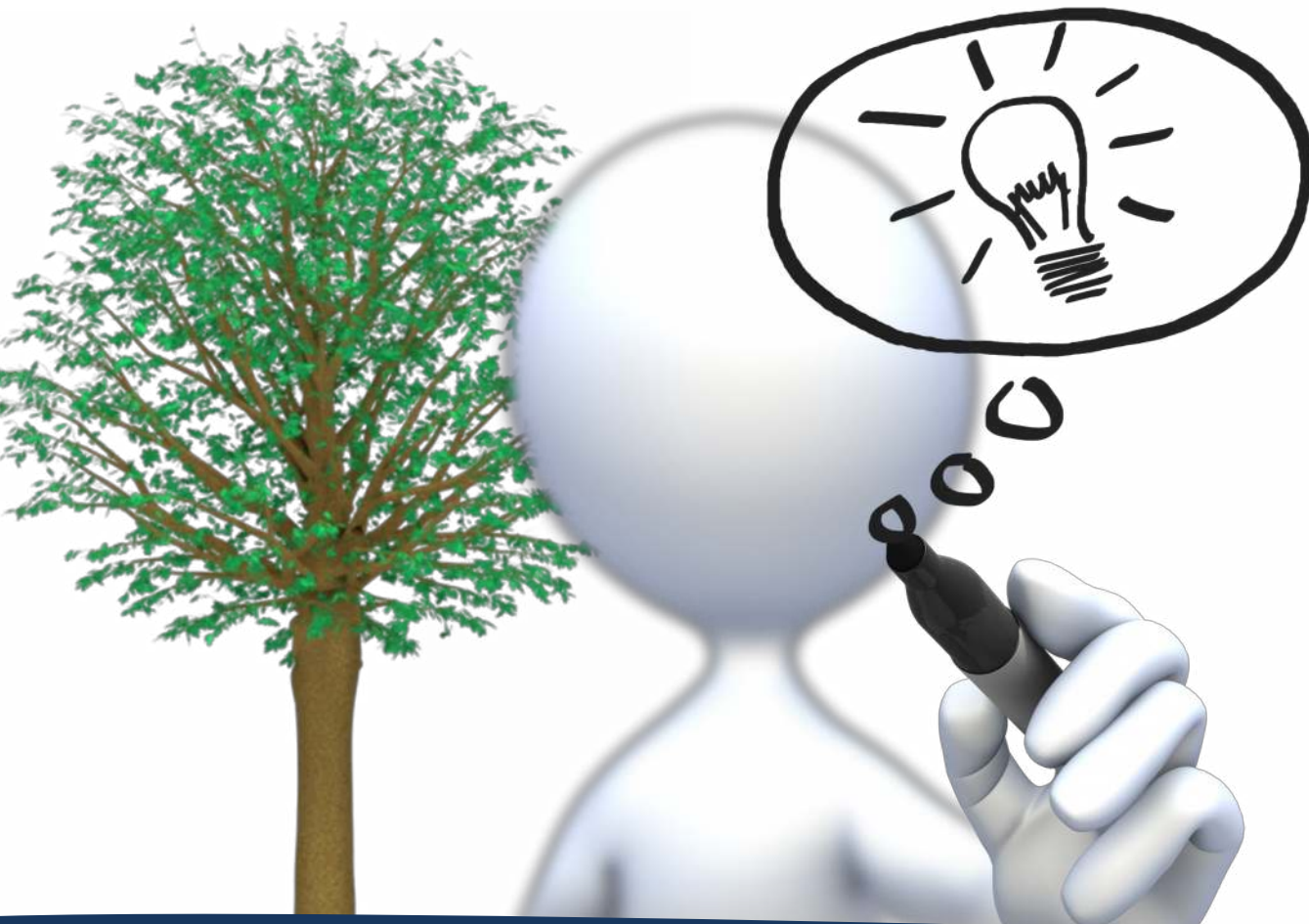


Tips & Tricks For IRIS Exchequer Accountants



If you need to create a quantity breaks for a whole group of stock items then you can quickly set this up. First select the group within the Stock Tree. The next step is to click Records > View and then select the 'Qty Breaks' tab from here. Once you have set up the breaks you can then use the 'Copy' button, and from there the option that says 'to all lower levels'. This will populate all of the stock code discounts for all items within the group including items within sub-groups.

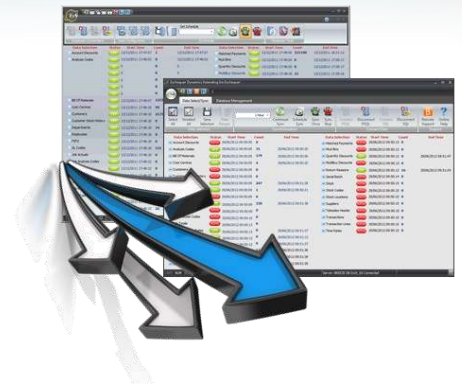
Note: If you decide to add a new stock record to the group after completing the previous steps, then the new record will not acquire the quantity breaks that you set before from the group record. There are two steps in this case: you can either set the quantity breaks for a specific record or simply use the steps from before using the 'Copy' button.





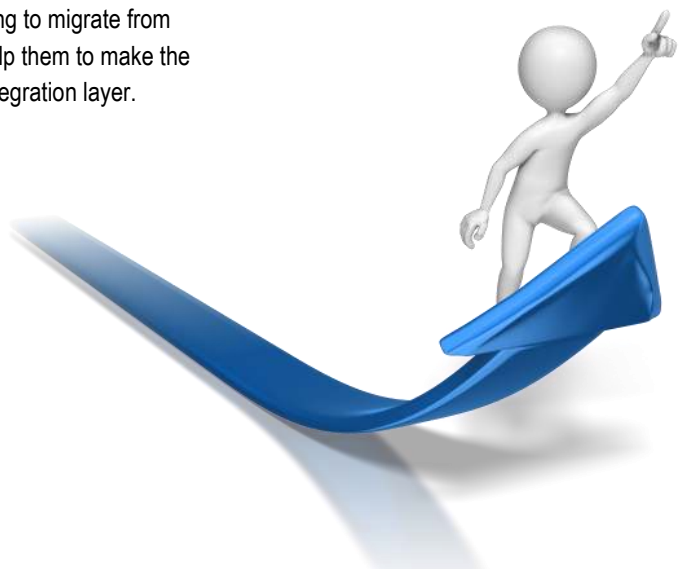
We have an on-going project with [Edinburgh Telford College](#) to integrate Exchequer with [IBM Cognos BI](#). Working closely with Cognos experts at [Barrachd](#) we have developed the ultimate business intelligence platform for Exchequer. This led to the development of a windows service application for our ExSync engine.

Once development started on the Windows Service Application, a decision was made to completely re-write the whole framework of the ExSync product to take into account the Iris rapid release program. With the new version we can now bolt in new releases of the Pervasive database quickly and at the same time, allowing users to select the Exchequer version going back to version 6.00 from the current version 6.10. Previously we had a version for each Iris Exchequer release.



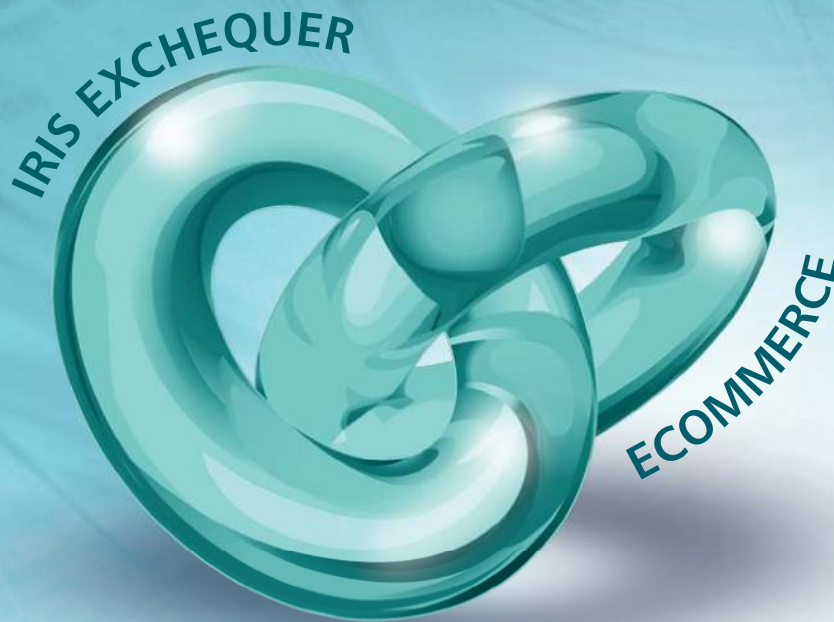
This simplifies the data migration for customers wanting to move away from Exchequer and we can act quickly and cost-effectively to migrate data. Another by-product of the development of the new Windows Service version was a [blistering performance gain](#).

We now find ourselves advising Exchequer customers looking to migrate from Exchequer and with our [ExFusion](#) product we are able to help them to make the decision to stay and extend Exchequer with our cohesive integration layer.



Fully integrated Iris Exchequer ecommerce

Ocean Ecommerce is a complete, fully automated, hosted ecommerce integration solution for Iris Exchequer users.



Ocean Ecommerce Exchequer Edition is a professional online shopping cart system fully integrated with Iris Exchequer via ExWeb. With near realtime data transfer you manage your entire stock catalogue from within Exchequer controlling pricing, stock levels and complex discounts.

All changes are automatically synchronised with the web site as a background task. As your web site gathers new customers, retail and trade orders these are instantly pushed into Exchequer as either quotes or sale orders. It's fast, efficient and extremely flexible.



www.ocean-ecommerce.net
sales@ocean-ecommerce.net
+44 (0) 203 006 0454





Automated synchronisation of:

- Stock levels, descriptions and pricing.
- Customer and stock level discounts.
- Orders and quotes with delivery and VAT.
- New customer registration.

Ecommerce made easy

Selling online is often high on the list for any business and in many ways it is hard to imagine there are still companies out there not doing it. Setting up shop to sell simple retail goods is relatively straight forward and there are hundreds websites offering "instant online shops". Selling business to business or to the trade is quite a different story. This is because, as many Exchequer users have discovered, complex discounting for both stock and customers is just not possible with most online shops. Add into the mix various price banding, multi-currency and variable tax ratings you will find very few online shop systems that can cope.

This is where the Ocean Ecommerce Exchequer edition excels. It has been designed specifically to replicate your Exchequer world on the web by automatically synchronising all your stock, orders and customers in near real time via ExWeb. In addition to this, the system is completely customisable so it can be developed to fit exactly with your business model, and the web interface can be skinned to give it any look you like from either your own designers or using Ocean's excellent in-house design service.

As a fully hosted service, for the web site there is nothing to install or configure as Ocean will take care of the whole process. Once the necessary server connections have been set up, product categories assigned and the design is agreed - you're ready to go!

So what is ExWeb?

Unlike any other product, ExWeb is a fully functional task managed scheduler that executes task threads to process data at lightening speeds. It sits between the web server and your Exchequer acting as a conduit to transfer the data from one to the other. Tests have shown that 200 orders can be input into Exchequer in less than 15 seconds and 15000 stock items can be updated in less than a minute.

There are no text files or xml or temporary documents to worry about. As long as there is a network connection between web server and data server the system works. When connectivity is lost the orders are queued up on the web server and are downloaded on the next polling.

ExWeb converts Iris Exchequer data and writes it directly into the web server's SQL database system. When writing back to Exchequer the data is passed through Iris's own COM toolkit* making sure everything is clean and safe for Exchequer and complies with warranty requirements.



"Ocean designed our original website several years ago and since then we have asked for numerous changes to be made as our company has grown. Each time these changes have been made quickly and efficiently. More recently we re-launched with their new Exchequer Edition. This has been a remarkable success not only by the number of online orders we have taken but also how the implementation went ahead with very little disruption and integrating with our Exchequer seamlessly."

Rohan Stedman - HB Ingredients Ltd



"The results are fantastic!. Ocean Ecommerce developed our E-Commerce website that seamlessly integrates with Exchequer. It has been up and running for over 12 months now enabling our customers and sale reps to place orders 24/7. Everything is synchronising very fast including all customer details, stocks, and prices."



"We have a number of complex pricing structures and these too are synchronising perfectly."

Archie David - Noble Sleek

* ExWeb requires an ODBC and a COM toolkit licence to write data back to Exchequer.

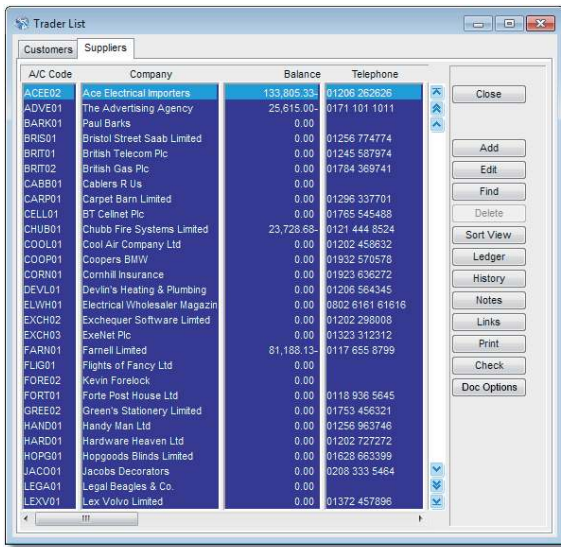


DOCUMENT OPTIONS LIMITED

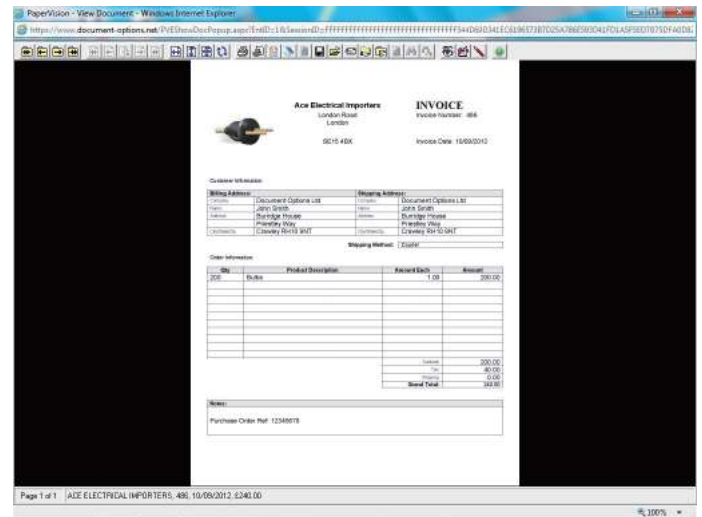
Would you like to access documents directly from Exchequer?

Well now you can. Document Options Ltd have teamed up with Exchequer Dynamics to offer IRIS Exchequer users a unique proposition for the archival and retrieval of documents.

By integrating Exchequer with our award winning cloud based PaperVision system our solution allows you to view actual documents such as supplier invoices directly from within Exchequer.



(For demonstration purposes only)



from this...

...to this



About Document Options

Document Options Ltd is a leading document management and outsourced document scanning service provider. We undertake certain business processes for our clients such as sorting and distributing incoming post, supporting automated invoice processing operations or providing an adhoc scanning service. We also design, develop and deploy on site scanning systems.

As a result, paper-based processes are transformed increasing efficiency, security and availability whilst reducing operating costs, storage costs and time.

If your business has large volumes of incoming or outgoing documents, we would love to speak with you.

Document Options Limited
Burrige House, Priestly Way
Crawley, RH10 9NT

T: +44 (0) 1293 426677
F: +44 (0) 1293 403453

sales@dol.co.uk
www.dol.co.uk



What does this mean for me?

Ever had the problem of needing to view an actual invoice or document which has been archived? Thumbing through lever arch files or boxes or paper isn't ideal. But by digitising your documents and indexing them correctly means you can search for a document quickly and without leaving your desk.

By further integrating your scanned images with your accounts package means you can seamlessly switch between an invoice entry and the actual invoice image.

What is PaperVision?

PaperVision is an award winning enterprise document management system. It can be accessed via the Internet with a username and password or via line of business applications such as SAP, Oracle and Exchequer. PaperVision is available either as a cloud service whereby we host your documents on our secure servers and provide support for a fixed monthly fee. Alternatively PaperVision can be purchased outright for you to host your own documents on your own servers for a one off cost and yearly support fee.

The system is very easy to use and is currently deployed across hundreds of organisations and companies ranging from London Borough of Southwark, Caffyns Motor Group and Southern Water.

How does the integration work with Exchequer?

The integration has been built by Exchequer Dynamics, a renowned solution provider specialising in integrating other business systems with IRIS Exchequer. The integration works by using document information such as invoice number, amount and date to generate a dynamic URL. This URL launches PaperVision and, using the document information, enables PaperVision to perform a search and display the relevant documents.

How do I digitise my documents?

As one of the largest scanning service providers in the country, Document Options Ltd is well placed to provide you with a scanning service. Alternatively we can provide scanning systems for you to scan your own documents inhouse.

I already have scanned documents, can you use them?

Yes.

Can I try before I buy?

Almost! Given the initial setup cost we would be unable to install the PaperVision launch button on your Exchequer or other system. However we can scan a selection of your documents and host them on PaperVision free of charge for you to trial and test the PaperVision system.





ExSync Release Comparison

ExSync is a multi-threaded application that connects to the Pervasive SQL server via ODBC and synchronizes the Iris Exchequer data to MS SQL Server or Oracle MySQL. In the process it converts all of the Iris Exchequer field values that are stored as split integers and also the dates stored as text converted to date time values. Because it is multi-threaded it can connect to many tables at once and synchronize multiple streams of data.



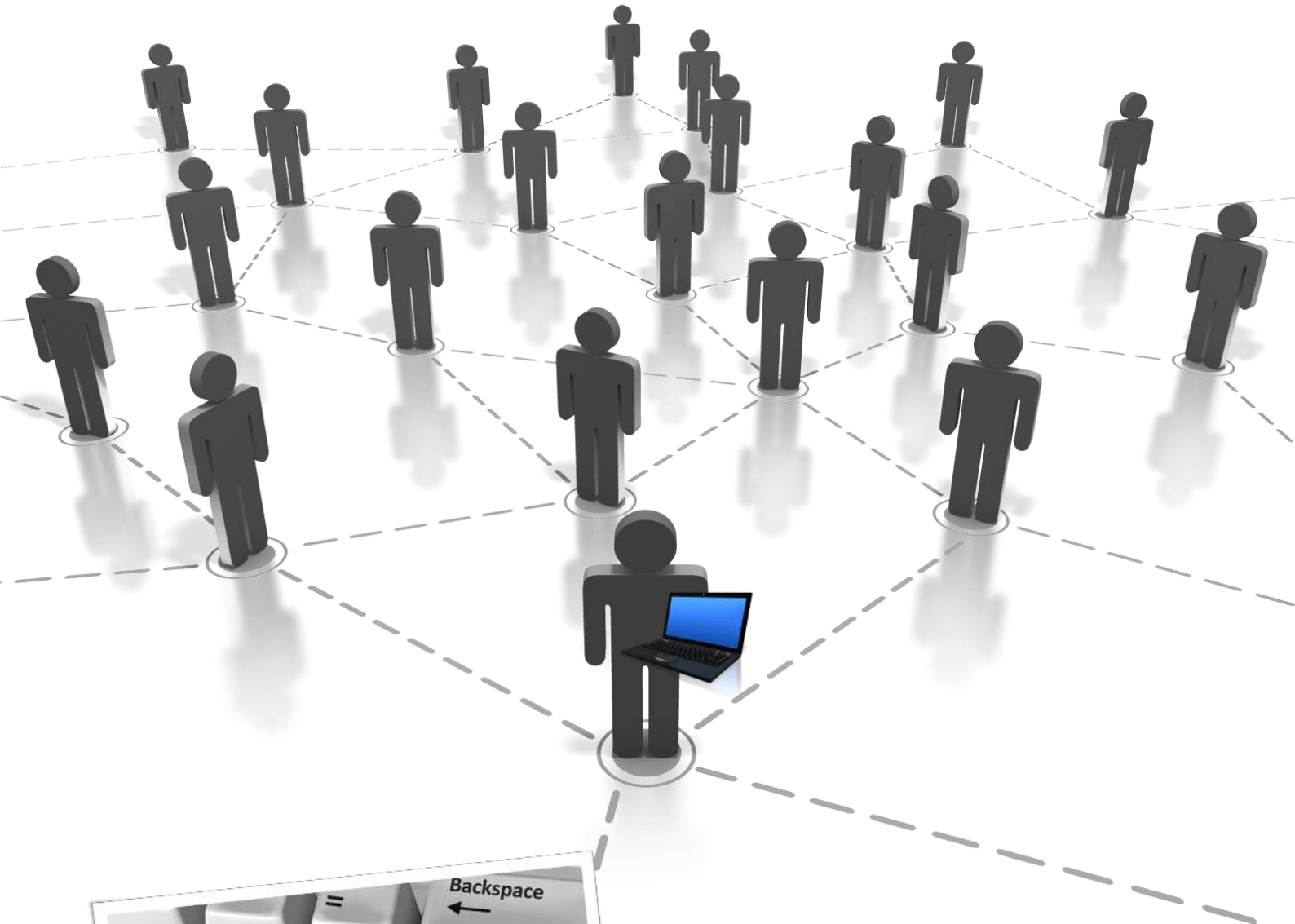
At Exchequer Dynamics we take pride in fixing issues and updating our products to the customers requirements where possible. The ExSync product has evolved considerably since its birth, and so we have created a small comparison guide to give an overview of the differences between each release. Soon we will add ExSync: Developer Edition to this table with its extra features listed.



Please be aware that ExSync: Service is a different product due to its specialist features.



	ExSync 3	ExSync 4	ExSync: Service
Iris Exchequer data to MS SQL Server or Oracle MySQL	✓	✓	✓
Multiple-threaded allowing synchronisation of multiple data streams of data	✓	✓	✓
Extended memory usage on 64bit Windows	✓	✓	✓
Easy online help interface, which is kept up-to-date	✓	✓	✓
Select up to last used date when synchronising Customers/Suppliers/Stock for faster updating		✓	✓
Ability to select smaller job ranges to speed up the update process.		✓	✓
Exchequer version control (v6.0 - v6.09)		✓	✓
Embedded Exchequer Dynamics remote support tool		✓	✓
79% Speed increase			✓
'Windows Scheduler' sync			✓
33% Less memory usage			✓



Suggestions?

If you have any suggestions for Exchequer World Publication, please send an e-mail to sales@exchequerdynamics.com

Content is not limited, you can send articles, ideas, images and even sound.

All sources will be credited.



Tips
Reporting
Integration
Support

Exchequer Dynamics Ltd,
Units 20-21 Somerford Business Park,
Christchurch,
Dorset,
United Kingdom,
BH23 3RU
Sales: +44 (0) 845 519 4487

